

The leading supplier of complete timber connection systems

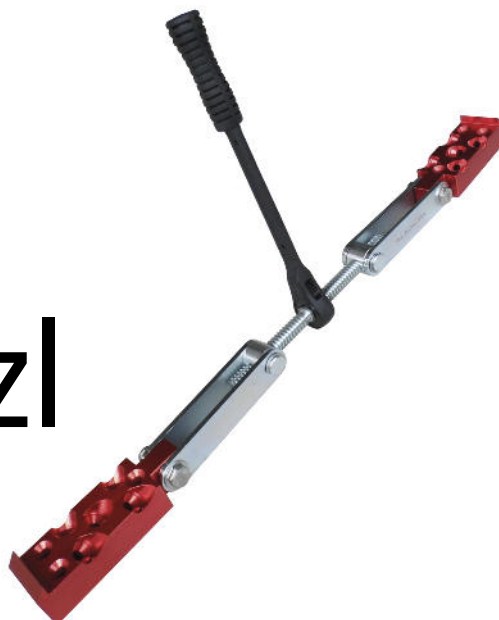


Tools





Welcome to the world of Pitzl



This is Pitzl

As a leading full-range supplier for wood connection systems, we are consistently trying to develop and optimise our products further. The Pitzl range includes post bases, balcony and fence posts, plug-in connector systems as well as post-purlin connections. Naturally, we also offer individual, custom-made solutions for your specific range of applications.

All Pitzl connectors and post bases can be used with screws from different manufacturers.

The design manual

With the Pitzl design manual and the corresponding calculation details an efficient and above all safe use of each product group is ensured.

You will find the free design manual for download here: www.pitzl-connectors.com/manuals

ETA-11/0295

European Technical Approval

All HVP connectors of Pitzl Metallbau GmbH & Co. KG have been approved through ETA -11/0295.

Holder of approval:

Pitzl Metallbau GmbH & Co. KG, Siemensstraße 26, DE-84051 Altheim - Germany

Tel.: +49 (0) 8703 9346-0, Telefax: +49 (0) 8703 9346-55, Internet: www.pitzl-connectors.com

Generic type and use of construction product:

Three-dimensional nailing plate (joist end connector for wood-to-wood connections, wood-to-concrete and steel connections)

(Valid from: 2013-04-30 to: 2018-01-02)



Pitzl product videos

Become acquainted with everything about the assembly and handling of the Pitzl products. The product videos from Pitzl show vividly and instructively the use of all current products. From balcony- and fence-posts to the new Pitzl tools, including the safe and smooth assembly of post bases and connectors.

Visit our website www.pitzl-connectors.com/en/videos and discover the diversity of the innovative Pitzl products.

Assemblage video:
Drilling device



Assemblage video:
Milling device



How-to video:
Nail sealing tape dispenser



Assemblage video:
Milling and assemblage jig





Pitzl tools

As a leading full-range supplier of innovative wood connection systems, we at Pitzl aim for the highest client satisfaction.

Beside reliable delivery and product quality, this motto applies, above all, to the technical support and maximum compliance with current standards and approvals.

The fact that we produce the largest part of the product range in-house with the highest quality requirements "Made in Germany" has turned to be in the last years an essential competitive advantage.

Thus we can respond specifically and flexibly to individual customers' requirements.

The development of innovative solutions for wood construction is our aim. Why stop here with connectors and post bases? Pitzl want to support its customers for the assembly of the products too. In this context we offer for each product a big range of useful accessories and tools for a quick, safe and above all accurate assembly.

For the right use of tools and accessories Pitzl offers instructive and informative videos on www.pitzl-connectors.com/videos.

Innovation, research and development rank as a top priority for Pitzl and will lead to many new future possibilities in the field of connector systems.

For queries and technical support please contact our support team at: support@pitzl-connectors.com





Table of contents

Twist drills and shell-type milling cutters	6
Drilling device and accessories	7
Milling and assembly templates	8
Milling unit and accessories	9
Wall support and accessories	10
Assembly jig / Pry bar	11
Beam pullers and accessories	12
Lifting clamps and accessories	13
Nail sealing tape dispenser	14



50937.2400



50937.0000



50938.0000



50939.0000



50936.2400



50937.8000



Twist drill set

Twist drills and shell-type milling cutters

Best quality for standard assembly of our products

Twist drills for post bases with threaded mandrel M 24 and M 30

Item no.	Ø mm	Working length mm	Overall length mm	Ø Drill chuck adapter mm	Max. revolutions per minute
50937.2400	24	125	220	16	2400
50937.3000	30	125	220	16	2200

Shell-type milling cutter for twist drills item no. 50937.2400 and item no. 50937.3000

Item no.	Ø mm	Max. revolutions per minute
50937.0000	103	1000

We recommend performing all drilling and milling works with our drilling equipment 59420.0000, an oblong hole drilling machine or other drilling devices.

Twist drill for post bases with threaded tube Ø 44 mm and smooth tube Ø 42.4 mm as well as our SPP connectors item no. 88712.0000 and 88716.0000

Item no.	Ø mm	Working length mm	Overall length mm	Ø Drill chuck adapter mm	Max. revolutions per min.
50938.0000	42,5	140	225	16	1800

Shell-type milling cutter for twist drill item no. 50938.0000

Item no.	Ø mm	Max. revolutions per minute
50939.0000	103	1000

Auger bit for our connectors SPP 80 item no. 88715.0000

Item no.	Ø mm	Working length mm	Overall length mm	Ø Drill chuck adapter mm	Max. revolutions per minute
50936.2400	24	100	200	12	1000

Shell-type milling cutter for auger bit M24 item no. 50936.2400

Item no.	Ø mm	Max. revolutions per minute
50937.8000	80	1000

We recommend performing all drilling and milling works with our drilling equipment 59420.0000, an oblong hole drilling machine or other drilling devices.

Please note: Twist drill and shell-type milling cutter are also available as a set including a top-grade wooden box.



50018.2000



50020.2000



59420.0000 (Drilling machine not included)

Drilling device

Perform drilling and milling operations in the cross-grained wood with efficiency and precision. Continuous adjustment enables the processing of timber dimensions between 120 x 120 and 240 x 240 mm. A sturdy rack and the depth stop make for a uniform drilling and milling result.

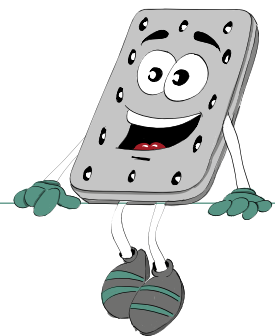
Item no.	Ø Drilling machine adapter in mm
59420.0000	57

Drill jig for precise guidance of the drill bit

Item no.	Ø mm
50020.2000	20
50020.2400	24
50020.3000	30
50020.4200	42,5

Support for drill jig

Item no.	Ø mm
50018.2000	20
50018.2400	24
50018.3000	30
50018.4200	42,5



Video



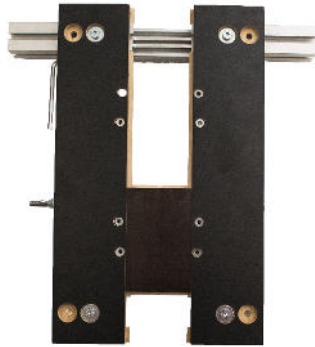
www.pitzl-connectors.com/videos/



Downloads



www.pitzl-connectors.com/downloads/



58000.0000

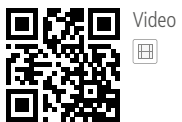
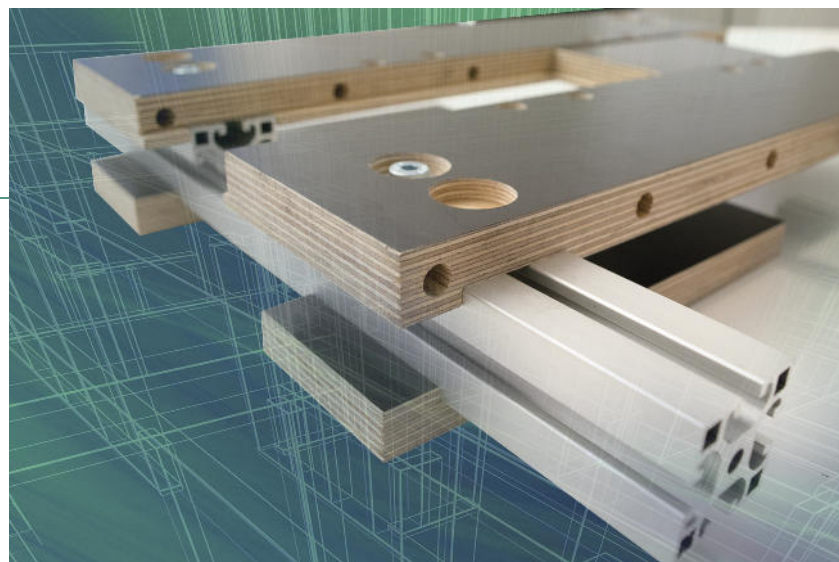


58400.0000

Milling and assembly templates

Milling and assembly templates for all connector sizes of HVP series.
 The flexible and easily adjustable templates enable a quick adjustment of connector width.
 Following correct adjustment, milling and assembly works can begin without any further adaptation being required.

Item no.	Connector width	Suitable for connector sizes item no.
58000.0000	25 - 80 mm	88004.0000 - 88322.0000
58400.0000	100 - 140 mm	88420.0000 - 88560.0000



Video



www.pitzl-connectors.com/videos/

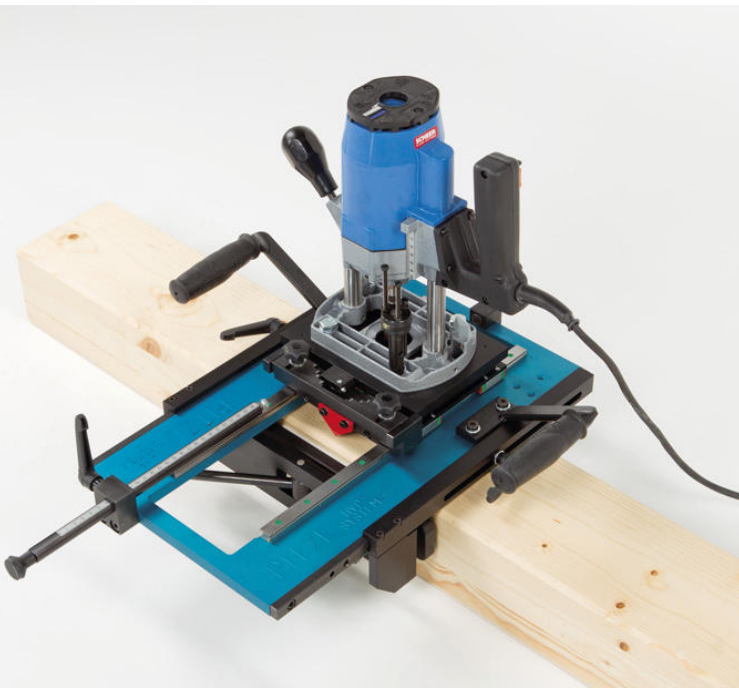


Downloads

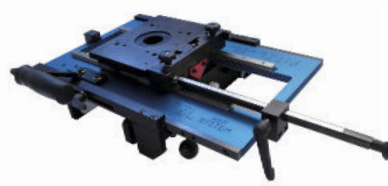


www.pitzl-connectors.com/downloads/





58399.0000



58390.0000



58391.0000



58392.0000



58393.0000

Milling unit

Item no.
58399.0000

The milling unit is composed of the following items:
 - Milling template item no. 58390.0000
 - Scheer hand overhead router item no. 58391.0000
 - Milling bit item no. 58392.0000

Milling template to mill in our HVP connectors

Easy handling, precise and fast.

Thanks to its compact build, the milling device can be applied in all main and secondary joist connections for all HVP sizes with 12 mm thickness. It ensures accurate milling for the connectors through harmonised components. Linear guides enable an absolutely clean and accurate milling cut-out. The eccentric clamping device allows for fast and precise fastening. The ergonomic design makes for comfortable and time-saving work.

Item no.
58390.0000

Scheer hand overhead router HM 14

The Scheer hand overhead router HM 14 is suitable for moderately difficult milling works and is ideal for milling metal mount. It is equipped with a universal motor for light flux.

Item no.	Output	Net weight	Stop	Male thread	Speed	Max. lift
58391.0000	1200 Watt	4,7 kg	3 x	M 10	1800	60 mm

Accessories for the Scheer HM 14 milling device

A guide bush Ø 30 mm and a milling cutter Ø 20 mm are required to achieve an accurate milling cut-out.

Item no.	Description
58392.0000	Milling bit HSS FRB 20 x 45 A
58393.0000	Guide bush Ø 30 mm

This combination is required for an optimum cut-out. It results in the accurate milling surface for the corresponding connector. This enables fast assembly without the need to additionally calibrate our connectors.



55650.0000



55650.1000



55650.2000

Wall support

3 parts, electroplated, fine adjustment via left/right thread, tube 45 x 45 mm

Item no.	Adjustment range mm	Thread	Weight
55650.0000	1600 - 4200	M 20	12,5 kg

Indication: Calculation software available on request

Distance piece

from tube 40 x 40 x 2 x 1265 mm for optimum alignment of the wall elements

Item no.
55650.1000

Lever

for easier adjustment of the wall support

Item no.
55650.2000





55600.0000



55800.0000

Assembly jig

variable for nailed trusses, electrogalvanised

Item no.	Description
55600.0000	M 16 x 700 - 1200 mm

Pry bar

with rubber handle for removing planks from rafters without straining your back (not for rafter / post connections)

Item no.	Weight	Length	Load capacity
55800.0000	2,54 kg	1 metre	60 kg at the height of the handle

Care has to be taken that during the use the pressure is oriented in the roof direction.



Video



www.pitzl-connectors.com/videos/



Downloads



www.pitzl-connectors.com/downloads/





55850.0000



55851.0000



55850.1000



55850.2000



55850.2100

Both beam pullers are delivered with our high quality transport box.

Beam puller with turn-adaptor

Fix, tighten, done!

Convenient work

Lay the turn-adaptor on the object and screw. Differently arranged boreholes allow a smoothly fastening on timber or masonry. The mounted to the adaptor butt strap serves for the fastening in grooves or to edges.

Therefore Pitzl beam puller provides a perfect stability for the processing of solid wood elements, alveolar elements and wood soft fiber elements.

Item no.	Span mm	Bohreholes Ø 8 mm	Max. tension load
55850.0000	560 - 720	16	20 kN

Advantages

- Can be fixed everywhere
- Slight damage of timber
- Easy handling
- Fastening in every angles

Beam puller with hooks

Fix, tighten, ready!

Item no.	Span mm	Drilled holes Ø 8 mm	Max. load capacity
55851.0000	600 - 760	2	20 kN

Advantages

- Through the additional bore fastening by one screw is possible.
- Special Pitzl hooks for easy and non destructive removal.

Easy setup for gentle and precise processing of wooden surfaces and wooden beams.

Both timber puller ratchets allow quick switch between different tool attachments.

Accessories

Item no.	Description
55850.1000	Hook
55850.2000	Bracing strip tensioner 1 - 8 mm
55850.2100	Adapter ring for bracing strip tensioner 55850.2000





55860.0000



55865.0000



Lifting clamps PowerClamp II D40/90

The lifting clamps - the latest innovation in timber construction.

Enables you easily to raise wooden beams and massive edge glued panels through a simple and quick fastening of the lifting clamps.

Drill, apply, lift!

Advantages of PowerClamp II D40/90

- Major time savings
- No other lifting gear needed
- No damage of wood surface
- No soiling

Scope of supply

- 2x PowerClamp II D40/90
- 1x Drill (40 mm)
- 1x High quality transport box

With a load capacity of up to 1000 kg the low-maintenance lifting clamp PowerClamp II D40/90 is your optimal partner for each construction project. Despite the low weight of handy 1,8 kg it is extremely robust.

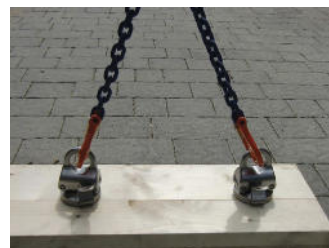
Application

Application is easy as can be. A drill-hole size of just 40 mm is sufficient. Insert the clamps and you can already effortlessly lift the structural element.

Item no.
55860.0000

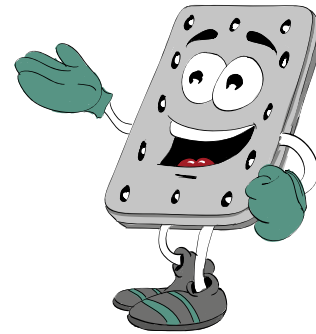
Accessories

Item no.	Description	Ø mm	Working length mm	Overall length mm
55865.0000	Twist drill „Spur Bit“	40	90	150





51910.0000



Nail sealing tape dispenser

A quick, uncomplicated and however precise affixing of the nail sealing tape!
The rolling out device from Pitzl's house makes it possible.

Advantages of Pitzl dispenser for nail sealing tape :

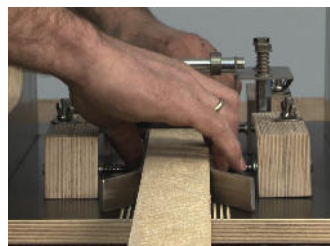
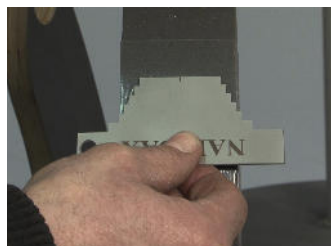
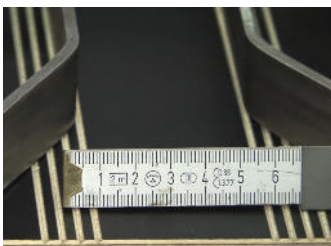
- Quick, uncomplicated adjustment on all usual widths of nail sealing tape up to 80 mm
- Easy adjustment to slat heights of 30, 40, 50 or 60 mm
- Slat widths from 50 to 100 mm steplessly adjustable
- Low deadweight (6,6 kg)

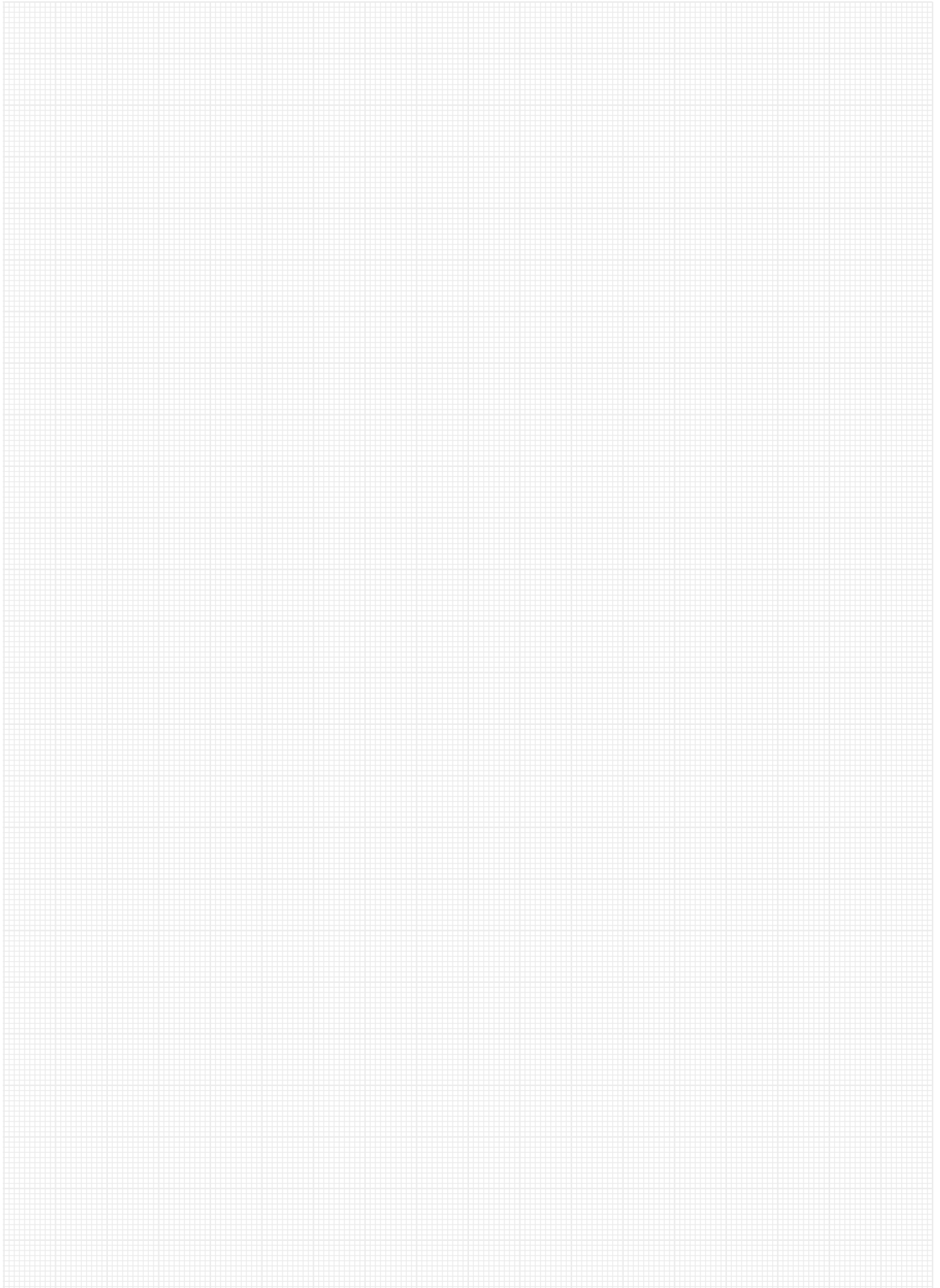
Further information :

In order to reach a perfect sticking result, we recommend to use dry and not impregnated slats.
The grooves in length give an alignment reference for the slats width.
Care has to be taken that the guide rail runs parallel to the groove.
An anti-sliding mat on the underside of the base plate guarantees a compact purchase on the work area.

Easy to use - for an accurate and clean result

Item no.
51910.0000







Fast, simple and precise: for the best result

- Wood connectors
- Post bases
- Balcony posts / fence posts
- Tools / accessories
- always up to date with www.pitzl-connectors.com

Manufacturer:

Pitzl Metallbau GmbH & Co. KG

Siemensstraße 26

84051 Altheim - Germany

Tel.: +49 8703 9346-0

Telefax: +49 8703 9346-55

Email: info@pitzl-connectors.com

www.pitzl-connectors.com

We recommend our distributor:



APTUS
FASTENER SYSTEMS
innovations in fastenings and fixings

T : +44(0) 1773 740 410
F : +44(0) 1773 740 417
e : sales@aptusfasteners.co.uk
w : www.aptusfasteners.co.uk

Aptus Fastener Systems UK Ltd
Salterwood Drive
Denby Hall Business Park
Denby, Derbyshire
DE5 8JY



ETA-11/0298 ETA-10/0413

For more information and technical details, downloads and helpful video tutorials: www.pitzl-connectors.com.
Alternatively, our competent staff are always available for advice: +49 8703 9346-0.